

# STEICO *floor*

Floor insulation system

Environmentally friendly building products  
from renewable raw materials



# technology & details

## contents

Processing instructions and  
Installation instructions for the STEICOfloor  
Floor insulation system

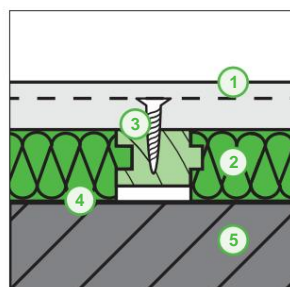


# STEICO

The natural building system

STEICOfloor is the intelligent insulation and fastening system for solid floorboards. The floorboards are attached to the integrated laying strip, which is fixed by the stable insulation panels.

Because there is no direct contact between the installation strip and the subsurface, the entire system is acoustically decoupled.



1. Solid plank floor
2. STEICOfloor with sound decoupled installation strip
3. Mechanical fastening of the floorboards (e.g. hidden through the spring)
4. Separating layer for mineral substrates
5. Concrete ceiling / wooden beams ceiling with load-bearing formwork

### | Delivery forms STEICOfloor

thickness [mm]	format [mm]	cover dimension [mm]	Thermal resistance R (m <sup>2</sup> K/W)	Sound insulation L'wR in dB Wooden beam ceiling	Sound insulation L'wR in dB solid ceiling
40	1,200*380	1,186*366	1.00	8n	23
60	1,200*380	1,186*366	1.50	10	25

### | Delivery forms STEICOfloor laying strip

thickness [mm]	Deck width [mm]	length [mm]	length [pieces / m <sup>2</sup> ]	Installation strips are available separately
35	50	2,000	1.3	
55	50	2,000	1.3	



### | general

- Before using STEICO products, ensure that the humidity is balanced. The building must be regularly ventilated and the drying time of the various elements must be respected (concrete ceiling, masonry, mortar substrates...).

### | hints

Store lying flat, flat and dry.

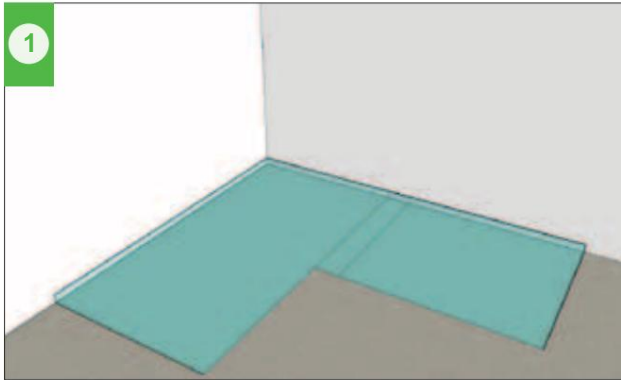
Protect edges from damage.

Only remove the foil packaging when the pallet is on a firm, level surface on dry ground.

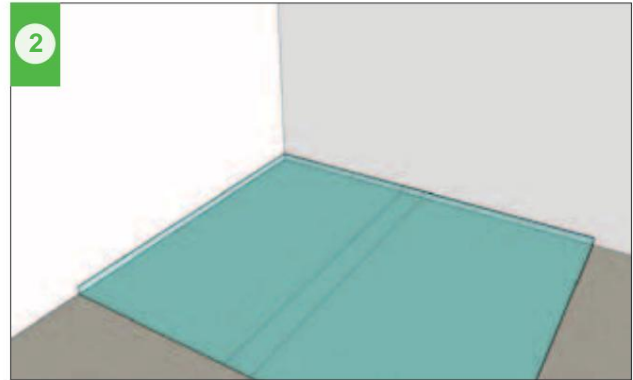
Please observe regulations for dust removal.

- STEICOfloor is used in rooms with normal moisture levels. Mission. The use in areas with increased moisture levels must be clarified in individual cases.
- If the STEICO product becomes damp during storage, it must be dried before processing.

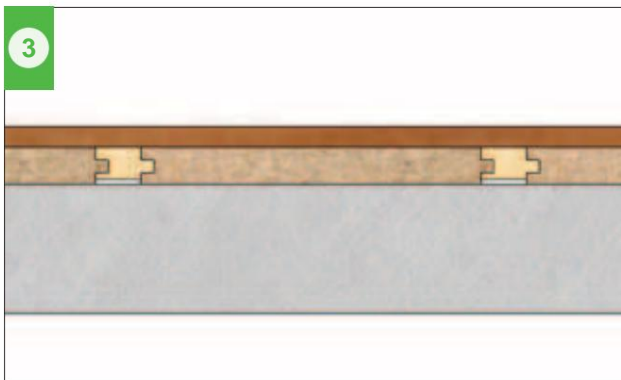
## | Processing STEICOfloor



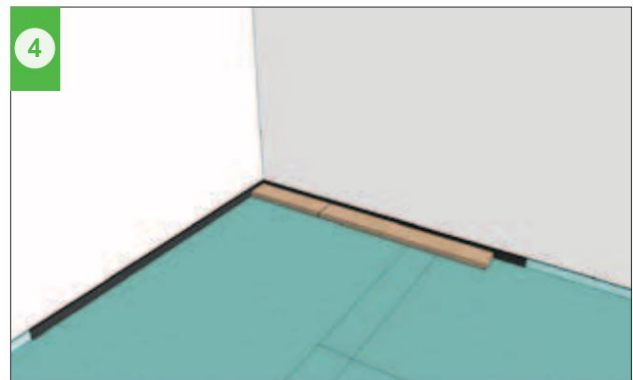
- STEICOfloor is installed on a flat, dry surface and laid on a stable surface.
- Moisture: 2% residual moisture for mineral substrates. Maximum residual moisture for wooden substrates is 13%.
- Flatness: max. 5mm at 2m distance.



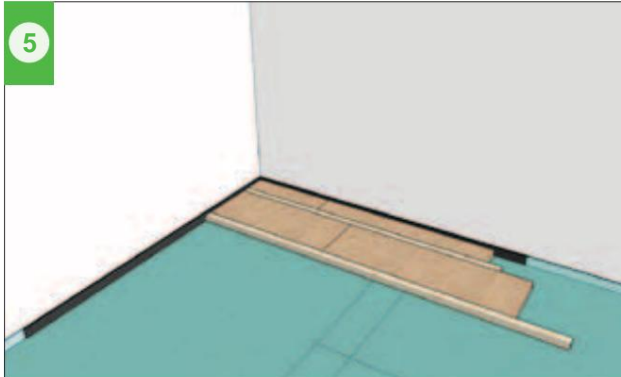
- On all mineral substrates, a moisture barrier must be applied over the entire surface before laying STEICOfloor (e.g. PE film  $d > 0.2\text{mm}$ )
- A 5 to 12mm expansion joint must be provided for all fixed elements (partitions, load-bearing walls, pipes, columns...).



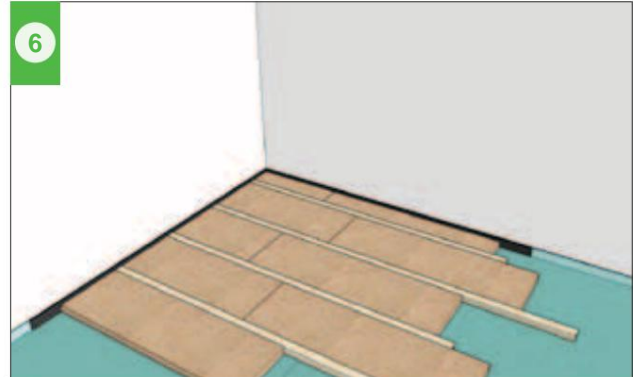
- In order to achieve sound insulation decoupling  
To ensure this, the installation strips have a smaller thickness than the insulation boards. When installed correctly, strips and insulation panels are flush on the top.
- Installation strips and insulation panels are laid floating on the base without gluing and are loosely joined together.



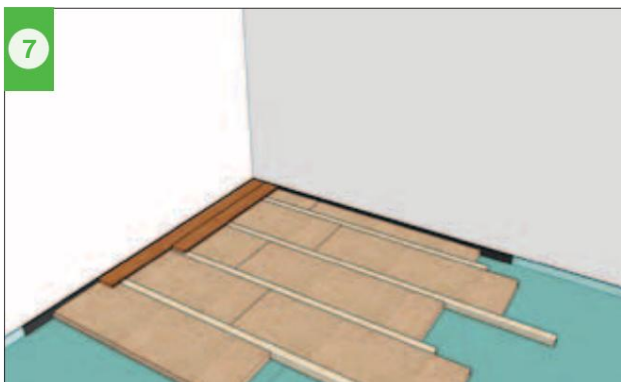
- The installation strips run transversely to the floorboard floor.
- There is a joint insulation at all edge connections. Insert strips up to the upper edge of the floorboard covering (e.g. *STEICOsoundstrip*).
- It is recommended to use half when laying plate width to start.



- The following rows of panels are finished with a Butt joint offset of at least 250 mm to the previous row.
- The longitudinal joints of the bearing timbers must be arranged in such a way that there is a minimum length or an offset of at least 500 mm to the previous row of strips. The distance between the ends of the laying strips ranges between 1-5 mm.



- Cuts must be made precisely because the panels are not flexible due to their dimensional stability and compressive strength.



- When attaching the floor covering to the installation strips, fasteners of the appropriate length must be selected.
- The installation strip must not be penetrated and no direct contact with the base must be made.



Das Zeichen für verantwortungsvolle Waldwirtschaft



Förderung nachhaltiger Waldwirtschaft  
www.pefc.de



manufacturing plant certified according to ISO 9001:2008

Further information can be found in the relevant construction booklets or at [www.steico.com](http://www.steico.com)